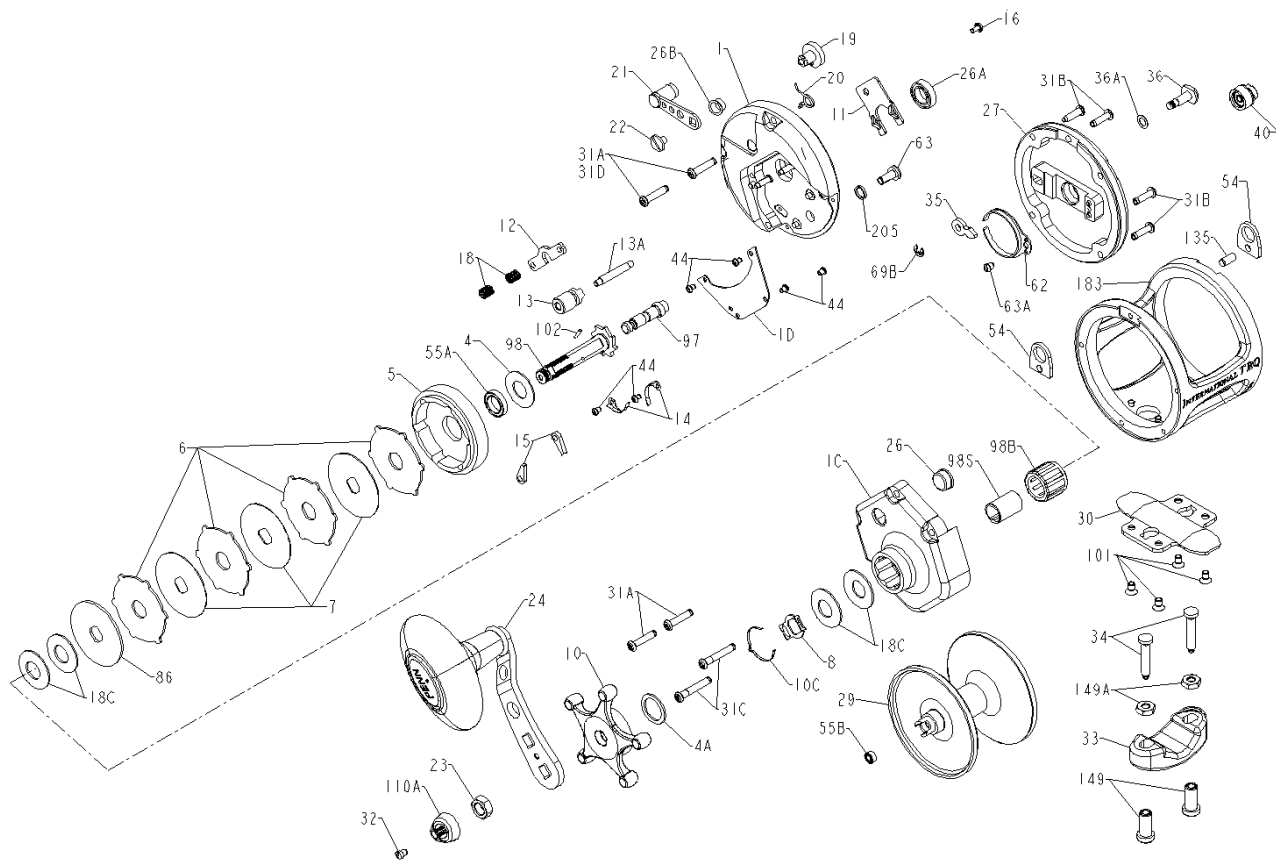




PARTS LIST FOR MODELS TRQ200 & TRQ300



<u>KEY NO.</u>	<u>200T PART NO.</u>	<u>300T PART NO.</u>	<u>DESCRIPTION</u>
1	001 200T	001 300T	Right Side Plate
1C	001C200T	001C300T	Cover, Right Side
1D	001D200T	001D300T	Backing Plate
4	004 060	004 060	Graphite Washer
4A	004 300T	004 300T	Graphite Washer
5	005 200T	005 300T	Main Gear
6	006 300T	006 300T	Drag Washer (4 req)
7	007 300T	007 300T	Metal Drag Washer (3 req)
8	008 113HN	008 113HN	Spring Retainer
10	010 300T	010 300T	Drag Star
10C	010C113HN	010C113HN	Detent Spring
11	011 300T	011 300T	Eccentric Jack
12	012 300T	012 300T	Pinion Yoke
13	013 200T	013 300T	Pinion
13A	013A200T	013A200T	Pinion Pin
14	014 300T	014 300T	Dog Spring (2 req)
15	015 200T	015 200T	Dog, Anti-reverse (2 req)
16	016 200T	016 200T	Eccentric Jack Screw
18	018 060	018 060	Clutch Spring (2 req)
18C	018 505	018 505	Tension Washer (4 req)
19	019 200T	019 300T	Eccentric
20	020 321LH	020 155	Eccentric Spring
21	021 200T	021 300T	Eccentric Lever Assembly
22	022 060CH	022 060CH	Screw, Sems Type (Eccentric Lever)
23	023 555	023 555	Handle Nut
24	024 200T	024S113HN	Handle Assembly
26	026 113HN	026 113HN	Bearing Cup Assembly
26A	026A2.5FR	026A2.5FR	Ball Bearing
26B	026 200T	026 200T	Eccentric Bushing
27	027 200T	027 300T	Left Side Plate Assembly
29	029L200T	029L300T	Spool Assembly
30	030 016VS	030 016VS	Stand
31A	031TA300T	031TA300T	Screw R.S. (2 req 200T)(4 req 300T)
31B	031TB300T	031TB300T	Screw L.S. (4 req)
31C	031T015KG	031TC300T	Screw R.S. (2 req)
31D	031TA200T	----	Screw R.S. (2 req) (200T Only)
32	039 010	039 010	Screw
33	033 113	033 113	Rod Clamp
34	034 016VS	034 016VS	Rod Clamp Screw (2 req)
35	035 060	035 060	Click Tongue
36	036 300T	036 300T	Click Button
36A	036A300T	036A300T	Washer, Click Button
40	040 300T	040 300T	Bearing Cup Assembly, L.S.
44	044 300T	044 300T	Screw (5 req 200T)(6 req 300T)
54	----	054 016S	Harness Lug (2 req) (300T Only)
*	----	*054A016VS	*Harness Lug Plug (2 req) (300T Only)
55A	055 113HN	055 113HN	Ball Bearing, (Main Gear)
55B	055 910	055 910	Ball Bearing (Spool Asm)
62	062 309	062 309	Click Spring
63	063 030T	063 030T	Screw, (Gear Stud)
63A	063 209	063 209	Screw, (Click Spring)
69B	069B600	069B600	Retaining Ring
86	086 300T	086 300T	Washer, Keyed
97	097 300T	097 300T	Bridge, (Gear) Stud
98	098 300T	098 300T	Gear Sleeve
98B	098B525	098B525	Clutch Bearing
98S	098S525	098S525	Clutch Bearing Sleeve
101	101 080ST	101 080ST	Screw, (Stand), (4 req)
102	102 060	102 060	Pin, Gear Sleeve
110A	110A555	110A555	Handle Nut Cap
135	----	135A080	Dowel Pin, (Lug) (300T Only)
149	149 045	149 045	Rod Clamp Nut (2 req)
149A	149 200	149 200	Hex Nut (2 req)
183	183 200T	183 300T	Frame
205	205 300T	205 300T	Washer, Gear Stud

* = Not Shown