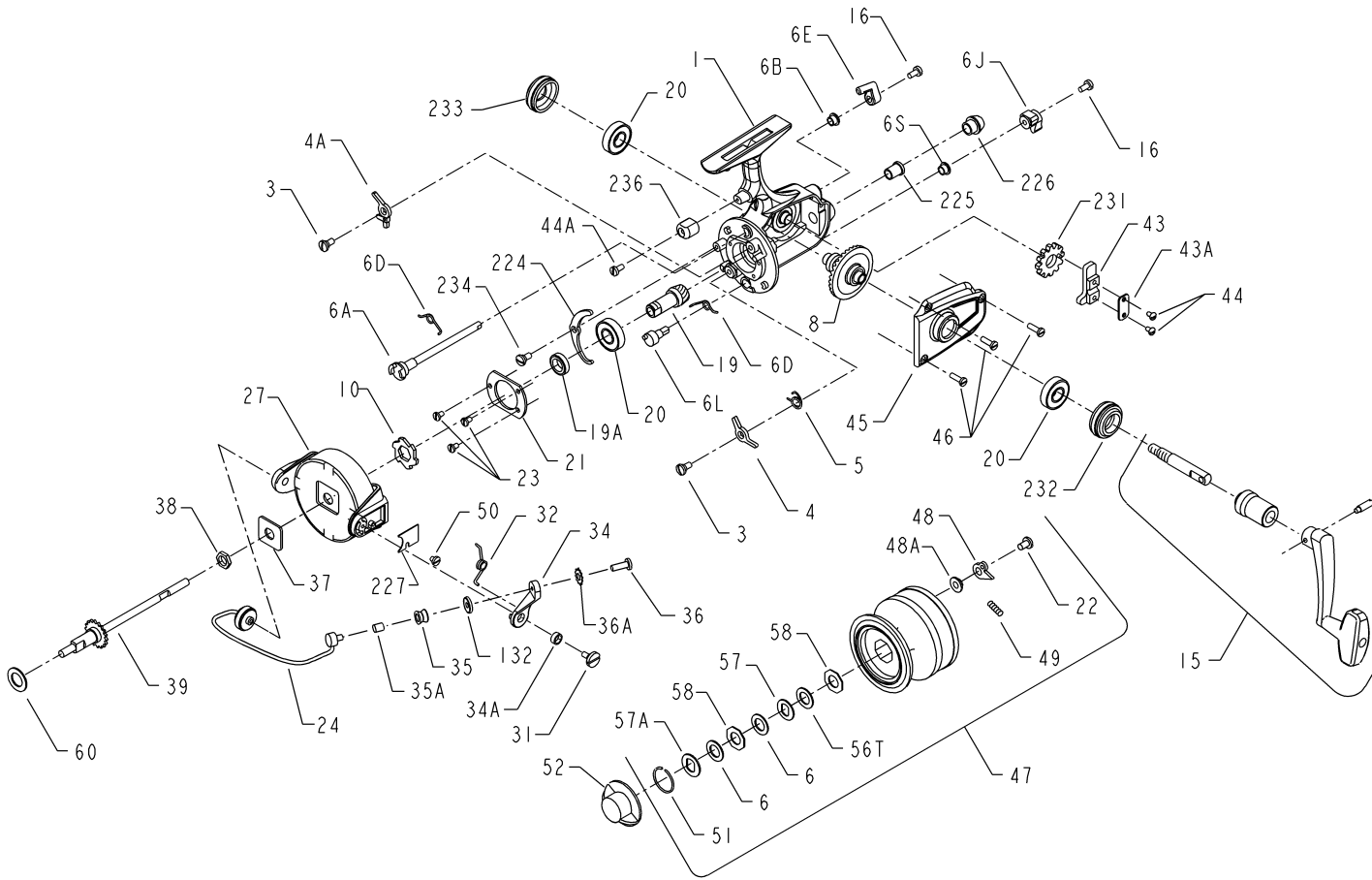




# PARTS LIST FOR MODELS 7500SS AND 8500SS



### KEY

KEY NO.	PART NO.	DESCRIPTION
1	001 7500	Housing
*	001 8500	Housing
3	003 750	Dog Screw (2 req.)
4	004 750	Dog
4A	004A750	Silent Dog
5	005 704	Click Dog Spring
6	006 060	Drag Washer HT-100 (2 req.)

### KEY

NO.	PART NO.	DESCRIPTION
6A	006A750	Upper Eccentric
6B	006B750	Upper Eccentric Liner
6D	006D710	Eccentric Spring
6E	006E750	Anti-Reverse Lever
6J	006J750	Silent Dog Lever
6L	006L750	Silent Eccentric
6S	006B700Z	Silent Eccentric Liner
8	008P7500	Main Gear
10	010 750	Ratchet
15	015N750M	Handle Assembly
*	015N950M	Handle Assembly
16	016 910	Eccentric Screw (2 req.)
19	019P7500	Pinion
19A	019A750	Pinion Spacer
20	020 704	Bearing (3 req.)
21	021 750	Bearing Cover
22	022 750	Spool Click Screw
23	023 750	Bearing Cover Screw (3 req.)
24	024 750	Bail Wire
*	024 850	Bail Wire
27	027 750	Rotor
*	027 850	Rotor
31	031 750M	Bail Arm Screw
32	032 750	Bail Arm Spring
34	034 750	Bail Arm
34A	034A750	Bail Arm Bushing
35	035 750	Liner Roller
35A	035A704	Line Roller Bushing
36	036 750	Bail Stud Screw
36A	036A750	Lock Washer
37	037 706	Rotor Washer
38	038 710	Rotor Nut
39	039 750	Spool Shaft
43	043 750	Crosswind Block
43A	043A750	Crosswind Block Plate
44	044 750	Crosswind Block Screw (2 req.)
44A	044 750	Trip Bumper Screw
45	045 7500	Housing Cover
46	046 750	Housing Cover Screw (3 req.)
47	047 7500	Spool (Complete)
*	047 8500	Spool (Complete)
48	048 750	Click Tongue
48A	048A750	Click Tongue Washer
49	049 710	Click Tongue Spring
50	050 712	Bail Spring Cover Screw
51	051 704	Retaining Ring
52	052 750	Drag Knob
56T	056T704	Drag Washer (Teflon®)
57	057 704	Drag Washer Keyed
57A	057A750	Drag Washer Keyed
58	058 704	Metal Keyed (Octagon) (2 req.)
60	060 750	Thrust Washer
132	132 750	Roller Washer
224	224 750	Transfer Lever
225	225 750	Crosswind Shaft Bushing
226	226 7500	Bushing Cap Cover
227	227 750	Bail Spring Cover
231	231 750	Crosswind Gear
232	232 750	Bearing Cover (Open)
233	233 750	Bearing Cover (Closed)
234	234 750	Transfer Lever Screw
236	236 750	Trip Bumper