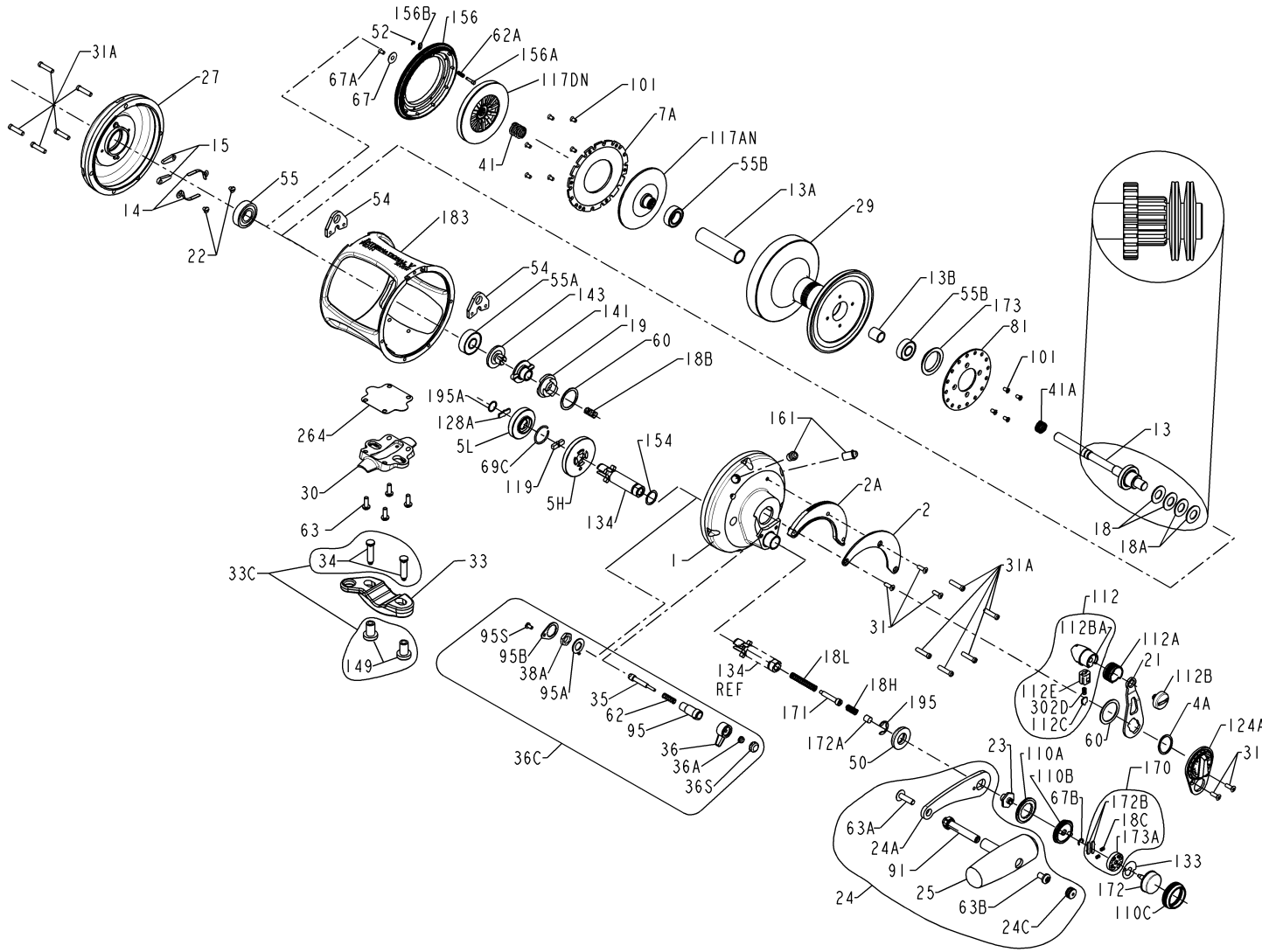




PARTS LIST FOR MODEL 50VSW For Serial No's C060001 and AFTER



| KEY NO. | DESCRIPTION | PART NO. | KEY NO. | DESCRIPTION | PART NO. |
|---------|--------------------------------|------------|---------|--------------------------------|------------|
| 33 | Rod Clamp | 033 070 | 101 | Drag / Ratchet Screw (10 req.) | 101 030 |
| 33C | Rod Clamp Kit | 033C070VS | 110A | Handle Screw Locking Ring | 110A030VS |
| 34 | Clamp Screw (2 req.) | 034 070VS | 110B | Shifter Base | 110B030VS |
| 35 | Click Tongue | 035 070VS | 110C | Shifter Button Retaining Ring | 110C030VS |
| 36 | Click Lever | 036N050 | 112 | Drag Lever Knob Assembly | 112 030VS |
| 36A | Click Lever Nut | 036 700 | 112A | Drag Knob Sleeve | 112A030VS |
| 36C | Clicker Assembly | 036C050VSW | 112B | Drag Knob Screw | 112B070 |
| 36S | Click Button Cap | 036S080ST | 112BA | Drag Lever Knob | 112B030VS |
| 38A | Click Bushing Nut | 038 710 | 112C | Drag Click Plate | 112C030VS |
| 41 | Drive Plate Bearing Spring | 041 050 | 112E | Drag Lever Click Plate Housing | 112E030VS |
| 41A | Drag Spring | 041 070 | 117AN | Inner Drive Plate Assembly | 117AN070 |
| 50 | Gear Stud Shield | 050 050VS | 117DN | Drive Plate Assembly | 117DN070VS |
| 52 | Drag Cover Lock Retaining | 052 910 | 119 | Hi/Low Gear Shift Plate | 119 024KG |
| 54 | Harness Lug (2 req.) | 054 050T | 124A | Bridge Cover Assembly | 124L050VS |
| 55 | Left Side Ball Bearing | 055 080 | 128A | Low Gear Drive Plate | 128A024KG |
| 55A | Right Side Ball Bearing | 055 050 | 133 | Shifter Retaining Plate | 133 030VS |
| 55B | Spool Ball Bearing (2 req.) | 055 080ST | 134 | Gear Stud | 134N050VS |
| 60 | Drag Thrust Washer (2 req.) | 060 050 | 141 | Cam Follower | 141 050VS |
| 62 | Click Spring | 062 050 | 143 | Preset Screw | 143 050VS |
| 62A | Drag Cover Lock Spring | 062 545 | 149 | Rod Clamp Nut (2 req.) | 149 070 |
| 63 | Stand Screw (4 req.) | 063 030T | *154 | *Gear Stud Shim (As Needed) | *154 080 |
| 63A | Handle Rivet Screw | 063A050 | 156 | Drag Cover Assembly | 156N050VS |
| 63B | Handle Knob Screw | 063 050 | 156A | Drag Cover Lock Pin | 156A030VS |
| 67 | Pinion Retaining Washer | 067 070 | 156B | Drag Cover Lock Plate | 156B030VS |
| 67A | Pinion Retaining Screw | 067A070 | 161 | Drag Locating Pin Asm (2 req.) | 161C030VSW |
| 67B | Shifter Retaining Ring | 067 030VS | 170 | Shifter Catch Holder Assembly | 170 030VS |
| 69C | H / L Gear Retaining Ring | 069C245 | 171 | Shifter Plunger (Screw) | 171 030VS |
| 81 | Ratchet Disk Plate | 081 050 | 172 | Shifter Button | 172 030VS |
| 91 | Handle Rivet | 091N050 | 172A | Shifter Spacer | 172A050VS |
| 95 | Click Tongue Bushing | 095 070 | 172B | Shifter Catch Plate(2 req) | 173 030VS |
| 95A | Click Bushing Washer | 095A050 | 173 | Spool Bushing | 173 050VS |
| 95B | Click Retaining Plate | 095B070 | 173A | Shifter Catch Holder | 173A030VS |
| 95S | Click Retaining Plate Screw | 023 750 | 183 | Tube Frame Asm (w/ dowl pins) | 183N050VSW |
| 101 | Drag / Ratchet Screw (10 req.) | 101 030 | 195 | Retaining Ring | 195 040 |
| 110A | Handle Screw Locking Ring | 110A030VS | 195A | Spiral Retaining Ring | 195 024KG |
| 110B | Shifter Base | 110B030VS | 264 | Stand Gasket | 264 030VS |
| 110C | Shifter Button Retaining Ring | 110C030VS | 302D | Drag Click Plate Spring | 302D525MAG |
| 112 | Drag Lever Knob Assembly | 112 030VS | | | |
| 112A | Drag Knob Sleeve | 112A030VS | | | |
| 112B | Drag Knob Screw | 112B070 | | | |
| 112BA | Drag Lever Knob | 112B030VS | | | |
| 112C | Drag Click Plate | 112C030VS | | | |
| 112E | Drag Lever Click Plate Housing | 112E030VS | | | |
| 117AN | Inner Drive Plate Assembly | 117AN070 | | | |
| 117DN | Drive Plate Assembly | 117DN070VS | | | |
| 119 | Hi/Low Gear Shift Plate | 119 024KG | | | |
| 124A | Bridge Cover Assembly | 124L050VS | | | |
| 128A | Low Gear Drive Plate | 128A024KG | | | |
| 133 | Shifter Retaining Plate | 133 030VS | | | |
| 134 | Gear Stud | 134N050VS | | | |
| 141 | Cam Follower | 141 050VS | | | |
| 143 | Preset Screw | 143 050VS | | | |
| 149 | Rod Clamp Nut (2 req.) | 149 070 | | | |
| *154 | *Gear Stud Shim (As Needed) | *154 080 | | | |
| 156 | Drag Cover Assembly | 156N050VS | | | |
| 156A | Drag Cover Lock Pin | 156A030VS | | | |
| 156B | Drag Cover Lock Plate | 156B030VS | | | |
| 161 | Drag Locating Pin Asm (2 req.) | 161C030VSW | | | |
| 170 | Shifter Catch Holder Assembly | 170 030VS | | | |
| 171 | Shifter Plunger (Screw) | 171 030VS | | | |
| 172 | Shifter Button | 172 030VS | | | |
| 172A | Shifter Spacer | 172A050VS | | | |
| 172B | Shifter Catch Plate(2 req) | 173 030VS | | | |
| 173 | Spool Bushing | 173 050VS | | | |
| 173A | Shifter Catch Holder | 173A030VS | | | |
| 183 | Tube Frame Asm (w/ dowl pins) | 183N050VSW | | | |
| 195 | Retaining Ring | 195 040 | | | |
| 195A | Spiral Retaining Ring | 195 024KG | | | |
| 264 | Stand Gasket | 264 030VS | | | |
| 302D | Drag Click Plate Spring | 302D525MAG | | | |
| | * One Shown | | | | |

| KEY NO. | DESCRIPTION | PART NO. |
|---------|---------------------------|-------------|
| 1 | Right Side Plate Assembly | 001N050VS |
| 2 | Quadrant Ring | 002 050VS |
| 2A | Quadrant Ratchet / Spacer | 002A050VS |
| 4A | Teflon Thrust Washer | 004 012LT |
| 5H | Main Gear (High Speed) | 005N050VSHS |
| 5L | Main Gear (Low Speed) | 005N050VLSL |
| 7A | Drag Washer | 007A050VS |
| 13 | Pinion Gear | 013 050VSW |
| 13A | Spool Sleeve | 013B050VSW |
| 13B | Pinion Gear Sleeve | 013B070 |

| KEY NO. | DESCRIPTION | PART NO. |
|---------|-------------------------------|-----------|
| 14 | Dog Spring (2 req.) | 014 050 |
| 15 | Dog (2 req.) | 015 050 |
| 18 | Clutch Spring (Light)(2req.) | 018 050TW |
| 18A | Clutch Spring (Heavy) (2req.) | 018 050W |
| 18B | Drag Spring | 018 349 |
| 18C | Shift Catch Spring (2 req) | 018C015KG |
| 18H | Shift Spring (Heavy) | 018H030VS |
| 18L | Shift Spring (Light) | 018L030VS |
| 19 | Drag Cam | 019 050VS |
| 21 | Drag Lever | 021 050VS |
| 22 | Dog Spring Screw (2 req) | 022 109 |

| KEY NO. | DESCRIPTION | PART NO. |
|---------|---------------------------------|-------------|
| 23 | Handle Screw | 023 030VS |
| 24 | Handle Assembly | 024 030VS |
| 24A | Handle Blank | 024 030VS-1 |
| 24C | Handle Knob Cap | 024C050M |
| 25 | Handle Knob Assembly | 025 050M |
| 27 | Left Side Plate Assembly | 027N050VS |
| 29 | Spool Assembly | 029N050VSW |
| 30 | Stand | 030 050VS |
| 31 | Drag Lever/Quad Screw (5 req) | 031T070 |
| 31A | Side Plate (Top) Screw (10 req) | 031 080VS |