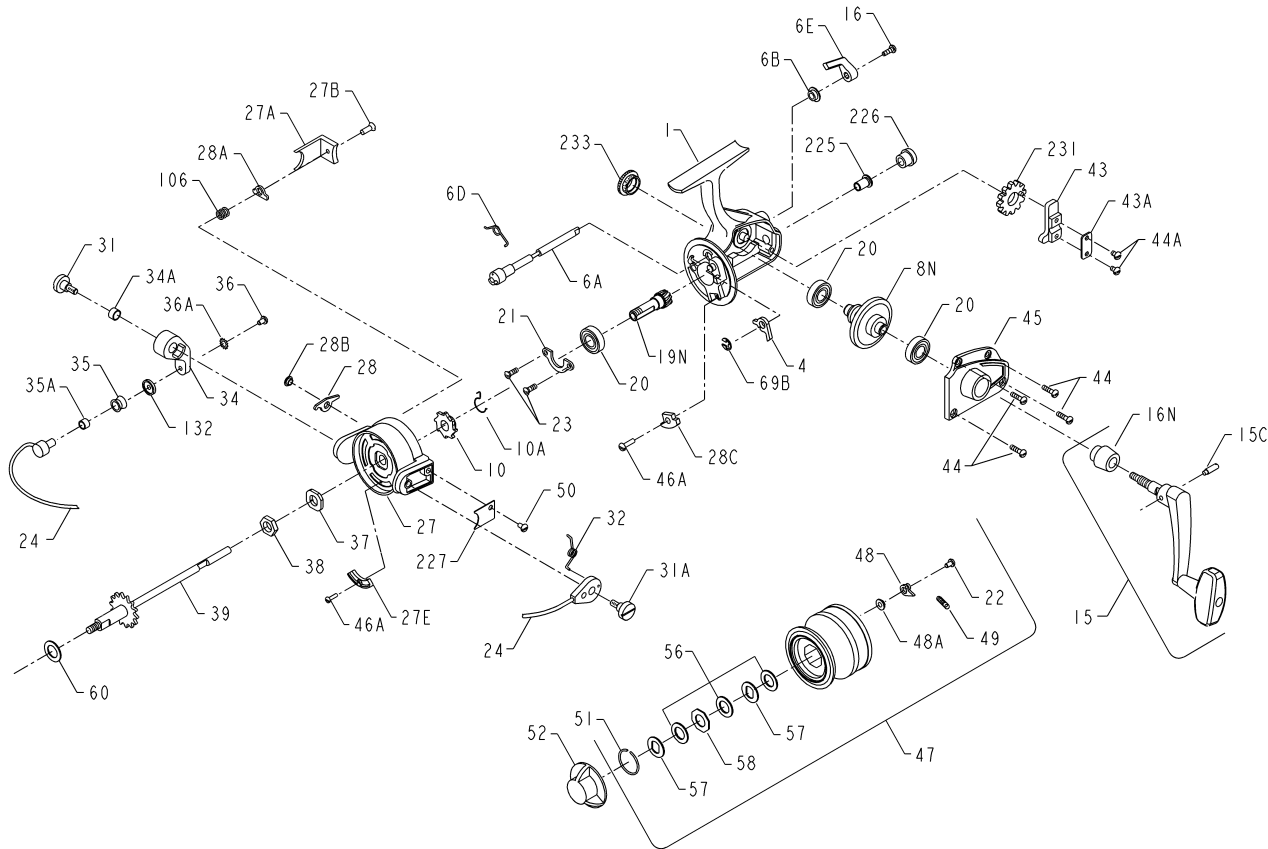




PARTS LIST FOR MODELS 4500SS AND 5500SS



KEY NO.	4500SS PART NO.	5500SS PART NO.	DESCRIPTION
1**	001P4500**	001P5500**	Housing
4	004N4400	004N4400	Dog
6A	006A450	006A450	Eccentric
6B	006B750	006B750	Eccentric Liner
6D	006D710	006D710	Eccentric Spring
6E	006E750	006E750	Eccentric Lever
8N	008N5500	008N5500	Main Gear
10	010N4400	010N4400	Ratchet
10A	230N5500	230N5500	Friction Spring
15	015 5500	015 5500	Handle
15C	015C650	015C650	Handle Pivot Screw
16	016 910	016 910	Eccentric Screw
16N	016 5500	016 5500	Handle Collar
19N	019N4500	019N4500	Pinion
20	020 722	020 722	Ball Bearing
21	021 450	021 450	Bearing Cover
22	022 750	022 750	Spool Click Screw
23	023 750	023 750	Bearing Cover Screw(2 req.)
24	024 450	024 5500	Bail Wire
27	027 4500	027 5500	Rotor
27A	027A450	027A5500	Bail Trip Cover
27B	027B420	027B420	Rotor End Screw
27E	027E5500	027E5500	Balance Weight
28	028 450	028 5500	Trip Lever
28A	028A440	028A440	Cam Lever
28B	028B5500	028B5500	Trip Lever Bushing
28C	028C440	028C440	Trip Cam
31	031 550	031 550	Bail Arm Screw
31A	031A450	031A450	Bail Cam Screw
32	032 440	032 440	Bail Spring
34	034 450	034 450	Bail Arm
34A	034A550	034A550	Bail Arm Bushing
35	035 704	035 704	Line Roller
35A	035A704	035A704	Line Roller Bushing
36	036 750	036 750	Bail Stud Screw
36A	036A750	036A750	Lock Washer
37	037 450	037 450	Rotor Washer
38	038 550	038 550	Rotor Nut
39	039N4500	039N5500	Spool Shaft
43	043N5500	043N5500	Crosswind Block
43A	043A550	043A550	Crosswind Block Plate
44	044 704	044 704	Cover Screw (4 req.)
44A	022 750	022 750	Crosswind Block Screw(2 req.)
45	045 5500	045 5500	Housing Cover
46A	046A704	046A704	Screw
47	047 4500	047 5500	Spool (Complete)
48	048 450	048 750	Click Tongue
48A	048A750	048A750	Click Tongue Washer
49	049 710	049 710	Click Tongue Spring
50	050 712	050 712	Bail Spring Cover Screw
51	051 710	051 710	Retaining Ring
52	052 550	052 550	Drag Knob
56	056 710	056 710	Drag Washer-HT100 (3 req.)
57	057 710	057 710	Metal Keyed Washer (2 req.)
58	058 710	058 710	Metal Slot (Octagon)
60	060 450	060 550	Thrust Washer
69B	069B4400	069B4400	Dog Retaining Ring
106	106 5500	106 5500	Lever Spring
132	132 450	132 450	Roller Washer
225	225 5500	225 5500	Crosswind Shaft Bushing
226	226 5500	226 5500	Bushing Cap Cover
227	227 440	227 440	Bail Spring Cover
231**	231N4500**	231N5500**	Crosswind Gear
233	233 440	233 440	Bearing Cover
*	300 5500*	300 5500*	Power Handle

* Not Shown
 ** When ordering 001P4500 or 001P5500
 you must order 231N4500 or 231N5500 respectively.