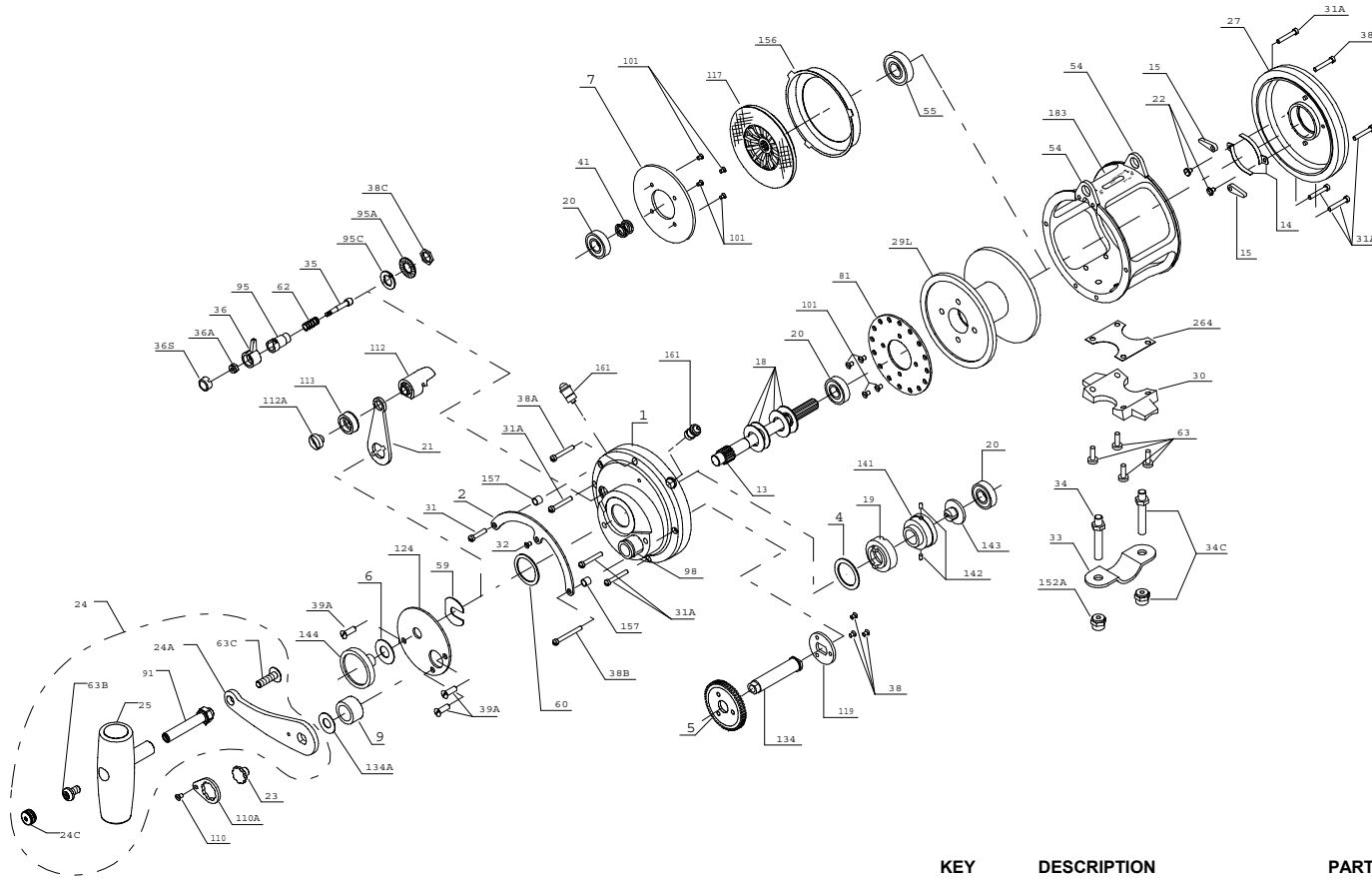




**PARTS LIST FOR MODEL 20T**



KEY NO.	DESCRIPTION	PART NO.	DESCRIPTION	PART NO.
1	R.S. Plate Assembly	001 020TN	Handle Complete	024 030TW
2	Quadrant Ring	002 030	Handle Blank Only	024 030TW-1
4	Cam Thrust Washer	004 030	Handle Knob Cap	024C050
5	Main Gear High Speed	005 050	Handle Knob	025 050
6	Preset Spacer Washer	006 155	L.S. Plate Assembly	027 020T
7	Metal Drag Washer	007 030	Spool	029L 020
9	Spacing Sleeve	009 030	Stand	030 020T
13	Pinion Gear	013 020	Short Quadrant Screw	031T020
14	Dog Spring (2 req.)	014 050	Frame Screw (7 req.)	031T080
15	Dog (2 req.)	015 050	Center Quadrant Screw	032T020
18	Disc Clutch Spring (4 req.)	018 030	Rod Clamp	033 049
19	Eccentric Cam	019 020	Rod Clamp Screw (2 req.)	034 030T
20	Ball Bearing (3 req.)	020 704	Rod Clamp Screw w/Nut	034C030T
21	Eccentric Lever	021 030	Click Tongue	035 050N
22	Dog Spring Screw (2 req.)	022 109	Click Button	036N050
23	Handle Screw	023 114	Click Button Nut	036 700
			Click Button Cap	036S080ST
			Coupling Plate Screw (3 req.)	038N007
			Frame Screw (2 req.)	038T050
			Long Quadrant Screw	038T080
			Click Bushing Nut	038 710
			Bridge Cover Screw (3 req.)	039A 080S
			L.S. Bearing Spring	041 050
			Cam Housing Screw (2 req.)	046A704
			Harness Lug (2 req.)	054 030T
			Left-Side Bearing	055 080
			Slotted Washer	059 050
			Backing Washer	060 050
			Click Spring	062 050
			Stand Screw (4 req.)	063 030T
			Long Screw	063 050
			Screw	063A050
			Ratchet	081 050
			Handle Rivet	091N050
			Click Tongue Bushing	095 050
			Click Bushing Washer	095A020
			Click Bushing Washer	095A050
			Bridge Bushing	098 030TN
			Drive Plate Screw (8 req.)	101 030
			Handle Lock Screw	110 050
			Handle Locking Plate	110A050
			Eccentric Lever Knob	112 050
			Eccentric Lever Screw	112A050
			Eccentric Lever Cap	113 050
			Drive Plate w/Drwg Washer	117D030
			Coupling Plate	119 050
			Bridge Cover	124 030
			Cam Housing	125 030
			Gear Stud	134 050
			Gear Stud Washer	134A050
			Cam Follower	141 030
			Follower Pin (2 req.)	142 050
			Adjusting Screw	143 030
			Preset Knob	144 050
			Rod Clamp Acorn Nut (2 req.)	152A030T
			Drag Cover	156 030
			Quadrant Spacer Bushing (2 req.)	157 050
			Locating Pin Assembly (2 req.)	161C070
			Tube Frame	183 020T
			Stand Gasket	264 030T