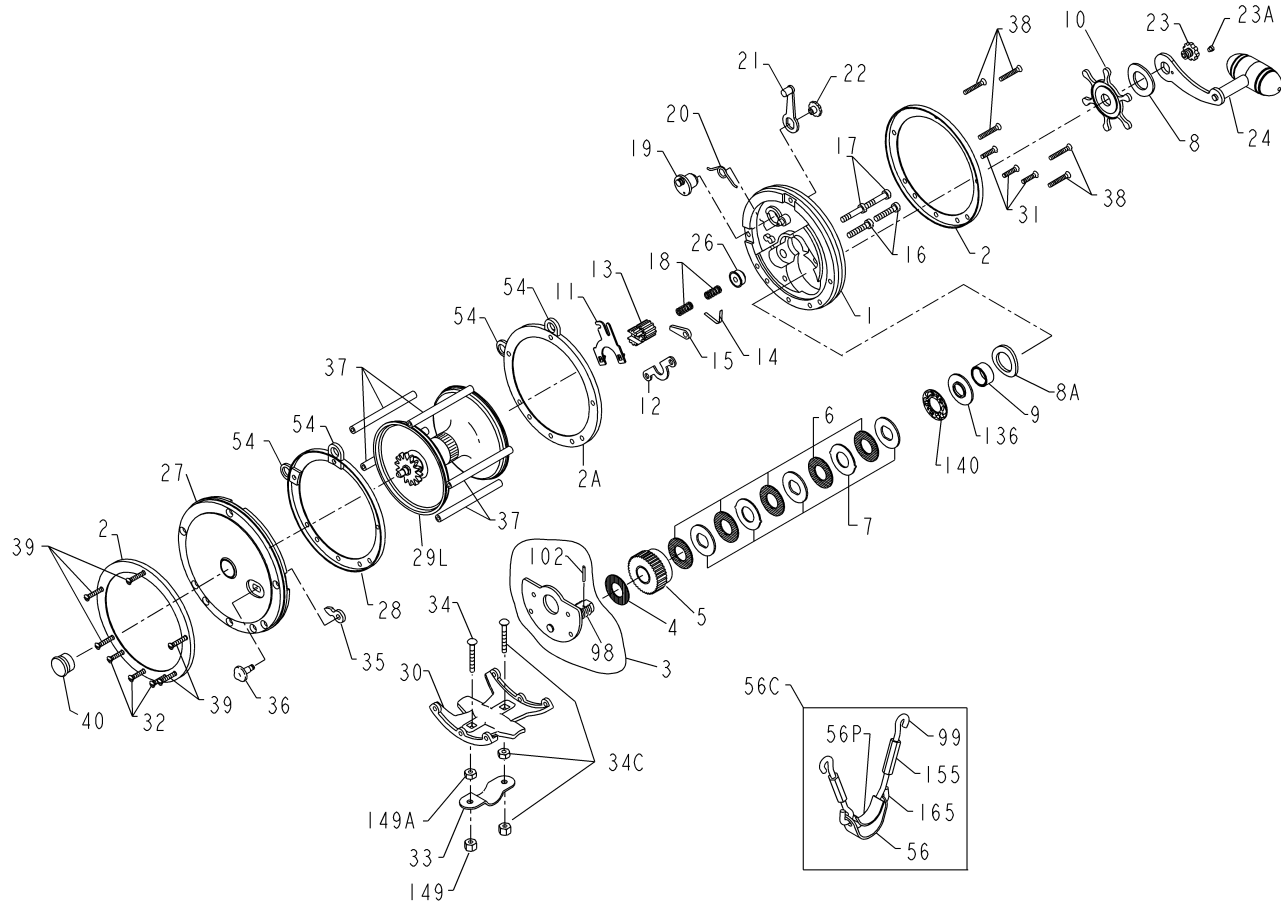




PARTS LIST FOR MODEL 115L



KEY NO.	PART NO.	DESCRIPTION
1	001 115	Right Side Plate
2	002 115O (2 req.)	Outer Right Side Ring
2A	002 115I	Inner Right Side Ring
3	003 115	Bridge Assembly
4	004 115	Fiber Washer
5	005 115	Main Gear
6	006 115 (5 req.)	Drag Washer
7	007C115	Metal Drag Washer Set
8	008 114	Tension Spring
8A	008 115	Tension Spring
9	009N114	Spacing Sleeve
10	010 114	Star Drag Wheel
11	011 115	Eccentric Jack
12	012 114	Pinion Yoke
13	013 115	Pinion
14	014 116	Dog Spring
15	015 115	Dog
16	016 114 (2 req.)	Lower Bridge Screw
17	017 114 (2 req.)	Upper Bridge Screw
18	018 114 (2 req.)	Clutch Springs
19	019 115	Eccentric
20	020 114	Eccentric Spring
21	021 114	Eccentric Lever
22	023 060	Eccentric Screw
23	023 116	Handle Screw
23A	110 060	Handle Lock Screw
24	024 057	Handle
26	026 116	Right Side Bearing
27	027 115	Left Side Plate Assembly
*	*	*(Includes Click Spring 062 114)
28	028 115-I	Inner Left Side Ring
29L	029L115	Spool Assembly
30	030 115	Stand
31	039 012 (3 req.)	Right Side Stand Screw
32	032 021	Left Side Stand Screw
33	033 340	Rod Clamp
*	*033R114	*Ringed Rod Clamp (Optional)
34	034 045	Clamp Screw
34C	034C045	Clamp Screw w/Nuts
35	035 115	Click Tongue
36	036 115	Click Button
37	037 115 (5 req.)	Frame Post
38	039 013 (5 req.)	Right Side Post Screw
39	039 012 (5 req.)	Left Side Post Screw
40	040 114H	Left Side Bearing
54	054 114 (4 req.)	Harness Lug
56	056 116	Rod Brace
56C	056C115	Rod Brace Assembly
56P	056P117	Rod Brace Pad
98	098 114	Gear Sleeve w/Pin
99	099 115 (2 req.)	Hook Screw L.H. Thread
102	102 114	Gear Sleeve Pin
136	136 115	Pressure Plate
140	140 115	Felt Washer
149	149 200 (2 req.)	Hex Nut
149A	149 045 (2 req.)	Clamp Nut
155	155 115 (2 req.)	Turnbuckle
165	165 115 (2 req.)	Hook Screw R.H. Thread

* = Not Shown